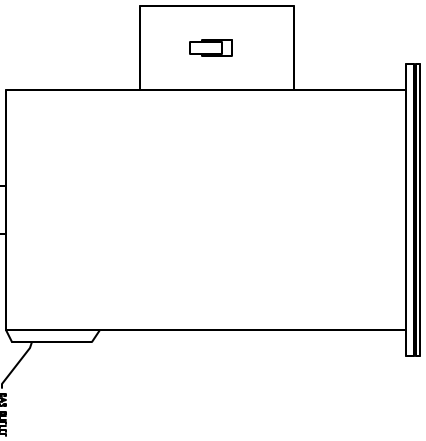
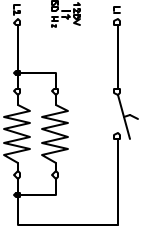


REV /	CON. NO.	DESCRIPTION	DATE
A	INITIAL RELEASE		4/1/94
B	REVISED FOR CON	REV	4/22/94
C	REVISED FOR CON	REV	5/26/94

REVISION BLOCK



PLUMBING DIAGRAM



WIRING DIAGRAM

OPERATING SPECIFICATIONS	
POD	1 1G 30 50
WIRE	3W 50 120V 180V
WIRE	Q30 0.42 1.48 1.5
WIRE AND BLOW (S&D)	1 1G 30 50
WIRE CONNECTION (S&D)	3/4" 1" 2" 3"
WIRE CONNECTION (S&D)	3/4" 1" 2" 3"
NUMBER OF HEATERS	1 1 1 2 2

WELSBACH™



DATE: 4/1/94
 TITLE: INSTALLATION INSTRUCTION

REVISED FOR CON
 4/22/94
 5/26/94
 1. OF 1
 930002-00
 8