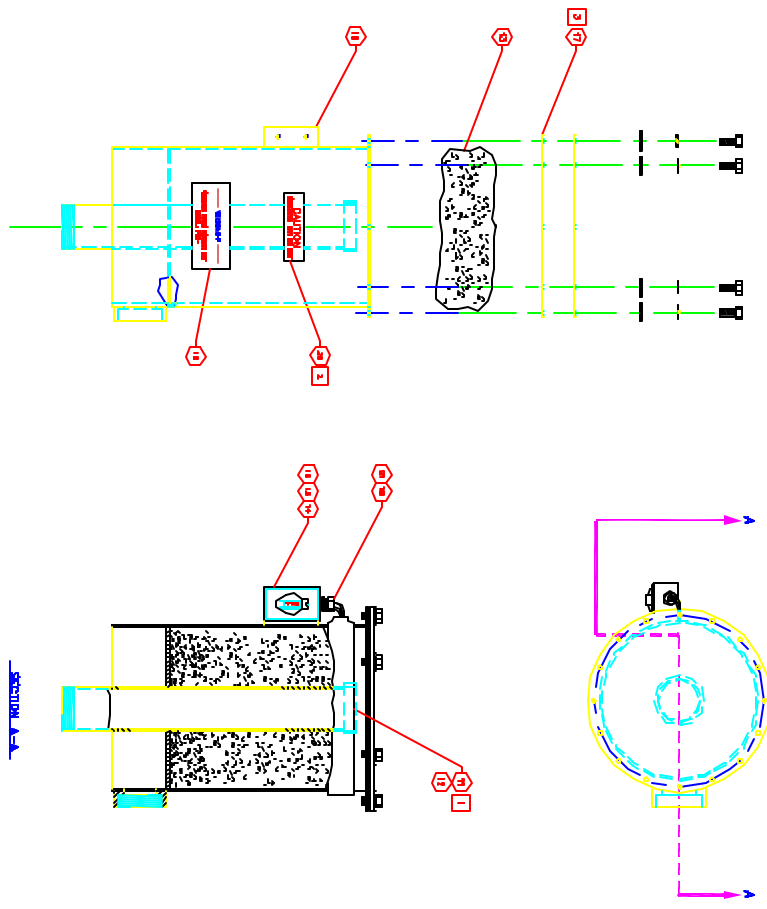


**NOTICE: UNLESS OTHERWISE SPECIFIED**

- 1. SOIL AND SUBS. ARE TO BE REMOVED FROM THE AREA OF THE EXISTING CONCRETE FOOTING.
- 2. FILL WITH 3" GRANULAR FILL TO 10' FROM EXIST. GRADE.
- 3. FILL WITH 3" GRANULAR FILL TO 10' FROM EXIST. GRADE.



REVISION BLOCK			
REV.	CON. NO.	DATE	DESCRIPTION
A		11/1/14	
B	446	11/1/14	REVISION PER ICM

**WELSBACH™**

3424 Paine Blvd  
 Ft. Worth, TX 76103

PROJECT: **POD-5D**

TITLE: **GENERAL ARRANGEMENT**

DATE: 11/1/14

SCALE: 1"=1'

PROJECT NO: 931002-25

REV: 8